

Human Progastrin-releasing peptide, ProGRP ELISA Kit

Catalog No.: BEK1255

Size: 96T

Range: 31.2 pg/ml - 2000 pg/ml

Sensitivity 2 pg/ml

Storage and Expiration: Store at 4°C for 6 months, or at -20°C for one year. **Store HRP conjugated antibody at 4°C for one year.**

Application: For quantitative detection of human ProGRP in serum, plasma, cell culture supernatants or tissue homogenate.

Introduction

Progastrin-releasing peptide (proGRP) is a recently identified biomarker of small cell lung cancer (SCLC). Plasma proGRP level could be a useful diagnostic and therapeutic monitoring biomarker for patients with SCLC and the initial level may help with SCLC tumor staging. ProGRP was highly expressed in NCI-H446 cells and xenograft tissue. It could be used as a marker for quality control in sample processing and storage in biobanks. Korse CM1 et al study concluded that a high-risk proGRP level (more than twice the upper reference value) in patients with well-differentiated neuroendocrine tumours, WDNETs is a strong indication for a primary tumour in the lung. Besides CgA, proGRP is a complementary tumour marker for prognosis and treatment monitoring in patients with neuroendocrine tumour.

Principle of the Assay

This kit was based on sandwich enzyme-linked immune-sorbent assay technology. Anti-ProGRP monoclonal antibody was pre-coated onto 96-well plates. The standards and test samples were added to the wells and any ProGRP present is bound by the immobilized antibody. After washing

away any unbound substances, the HRP conjugated anti-ProGRP monoclonal antibody was added to wells as detection antibodies. Following a wash to remove any unbound antibody-enzyme reagent, the TMB substrates were added to visualize HRP enzymatic reaction. TMB was catalyzed by HRP to produce a blue color product that changed into yellow after adding stop solution. The density of yellow is proportional to the ProGRP amount of sample captured in plate. Read the O.D. absorbance at 450nm in a microplate reader, and then the concentration of ProGRP can be calculated.

Kit components

1. One 96-well plate pre-coated with anti-human ProGRP antibody
2. Lyophilized human ProGRP standards: 2 tubes (10 ng / tube)
3. Sample / Standard diluent buffer: 30 ml
4. HRP conjugated anti-human ProGRP antibody (Concentrated): 130 µl. Dilution: 1:100 (Store at 4°C, do NOT store it at -20°C)
5. Antibody diluent buffer: 12 ml
6. TMB substrate: 10 ml
7. Stop solution: 10 ml
8. Wash buffer: 30 ml (25x). Dilution: 1:25

Note: Reconstitute standards and test samples with Kit Component 3.

Material Required But Not Provided

1. Microplate reader (wavelength: 450nm)
2. Precise pipette and disposable pipette tips
3. Deionized or distilled water
4. Automated plate washer
5. Beakers, flasks or cylinders, etc.
6. Statistical calculator
7. Plate cover
8. Absorbent filter papers or absorbent material
9. ELISA shaker

FOR RESEARCH USE ONLY. NOT FOR DIAGNOSTIC AND CLINICAL USE.

Chongqing Biospes Co., Ltd Tel: +86-23-67567091 Fax: +86-23-67745923

7F, Bldg B, High-tech Venture Park, # 107 Erlang Chuangye Rd, Jiulongpo District, Chongqing, 400039, China

www.biospes.com

Protocol

● Preparation of sample and reagents

The concentrated reagents should be brought to room temperature and should be diluted before starting the test procedure. If crystals have formed in the reagents, warm them gently until they have completely dissolved.

1. Sample

Isolate the test samples soon after collecting, then, analyze immediately (within 2 hours). Or aliquot and store at -20°C for long term. Avoid multiple freeze-thaw cycles.

✧ **Cell culture supernatants:** Centrifuge to remove particulates, analyze immediately or aliquot and store at -20°C. Avoid multiple freeze-thaw cycles.

✧ **Serum:** Coagulate the serum at room temperature (about 2 hours). Centrifuge at approximately 1000 × g for 20 min. Analyze the serum immediately or aliquot and store at -20°C. Avoid multiple freeze-thaw cycles.

✧ **Plasma:** Collect plasma with EDTA or heparin as the anticoagulant. Centrifuge for 20 min at 1000 × g within 30 min of collection. Analyze immediately or aliquot and store at -20°C. Avoid multiple freeze-thaw cycles. **Citrate can not be used as anticoagulant here.**

✧ **Tissue homogenate:** Cut samples and weight, add certain volume of 0.01M PBS, homogenize the tissue samples, then, centrifuge to collect the supernatant to analyze.

Note: 1. Coagulate blood samples completely, then, centrifuge, and avoid hemolysis and particle. Grossly hemolyzed or lipemic samples may not be suitable for measurement of human ProGRP with this assay.

2. NaN₃ can not be used as test sample preservative, since it is the inhibitor for HRP.

3. After collecting samples, analyze immediately or aliquot and store at -20°C or -80°C. Avoid repeated freeze-thaw cycles.

2. Wash buffer

Pour entire contents (30 ml) of the Wash buffer (25x) (Kit Component 8) into a clean 750 ml graduated cylinder. Bring to final volume of 750 ml with distilled or deionized water. Mix gently to avoid foaming. Then, transfer to a clean wash bottle and store at 2-25°C. Wash buffer (1x) can be stable for 30 days.

3. Standard

Reconstitution of the lyophilized human ProGRP standard (Kit Component 2): standard solution should be prepared no more than 2 hours prior to the experiment. Two tubes of standard are included in each kit. Use one tube for each experiment. **(Note: Do not dilute the standard directly in the plate)**

a. 10,000 pg/ml of standard solution: Add **1 ml** of Sample / Standard diluent buffer (Kit Component 3) into one Standard (Kit Component 2) tube, keep the tube at room temperature for 10 min and mix thoroughly.

b. 2000 pg/ml of standard solution: Add **0.2 ml** of the above 10 ng/ml standard solution into **0.8 ml** sample diluent buffer (Kit Component 3) and mix thoroughly.

c. 1000 pg/ml → 31.2 pg/ml of standard solutions: Label 6 Eppendorf tubes with 1000 pg/ml, 500 pg/ml, 250 pg/ml, 125 pg/ml, 62.5 pg/ml, 31.2 pg/ml, respectively. Aliquot **0.3 ml** of the Sample / Standard diluent buffer (Kit Component 3) into each tube. Add **0.3 ml** of the above 2000 pg/ml standard solution into 1st tube and mix thoroughly. Transfer **0.3 ml** from 1st tube to 2nd tube and mix thoroughly. Transfer **0.3 ml**

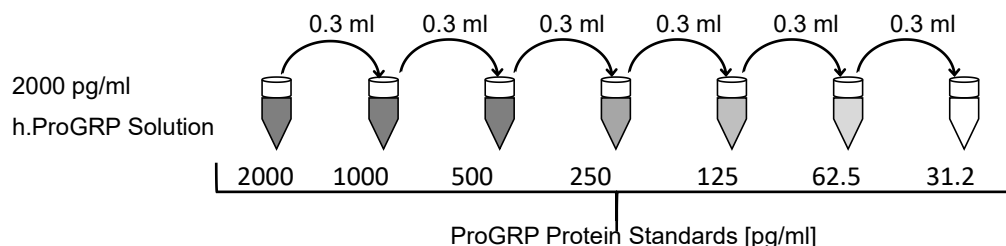
FOR RESEARCH USE ONLY. NOT FOR DIAGNOSTIC AND CLINICAL USE.

Chongqing Biospes Co., Ltd Tel: +86-23-67567091 Fax: +86-23-67745923

7F, Bldg B, High-tech Venture Park, # 107 Erlang Chuangye Rd, Jiulongpo District, Chongqing, 400039, China

www.biospes.com

from 2nd tube to 3rd tube and mix thoroughly, and so on.



Note: The standard solutions are best used within 2 hours. The 2000 pg/ml standard solution should be used within 12 hours. Or store at -20°C for up to 48 hours. Avoid repeated freeze-thaw cycles.

4. Preparation of HRP conjugated anti-human ProGRP antibody (Kit Component 4) working solution: the HRP conjugated antibody should be used within 30 min after diluting.

- Calculate the total volume of the working solution: 0.1 ml / well × quantity of wells. (Allow 0.1-0.2 ml more than the total volume)
- Dilute the HRP conjugated anti-human ProGRP antibody (Kit Component 4) with Antibody diluent buffer (Kit Component 5) at 1:100 and mix thoroughly. i.e. Add 1 µl of HRP conjugated anti-human ProGRP antibody into 99 µl of Antibody diluent buffer.

● **Assay procedure**

Equilibrate all kit components to room temperature before use.

- Set standard, test sample and control (zero) wells on the pre-coated plate respectively, and then, record their positions. It is recommend to measure each sample, standard, zero and optional control sample in duplicate. Remove extra microwell strips from holder and store them in foil bag at 4°C, or at -20°C for long term.
- Aliquot 0.1 ml of 2000 pg/ml, 1000 pg/ml, 500 pg/ml, 250 pg/ml, 125 pg/ml, 62.5 pg/ml, 31.2 pg/ml standard solutions into the standard wells.
- Add 0.1 ml of Sample / Standard diluent buffer (Kit Component 3) into the control (zero) well.
- Add 0.1 ml of properly diluted sample (human serum, cell culture supernatants or tissue homogenate) into test sample wells.

Here is an example of the arrangement of sample, standard and zero in the plate wells:

	1	2	3	4
A	Standard 1 (2000 pg/ml)	Standard 1 (2000 pg/ml)	Sample 1	Sample 1
B	Standard 2 (1000 pg/ml)	Standard 2 (1000 pg/ml)	Sample 2	Sample 2
C	Standard 3 (500 pg/ml)	Standard 3 (500 pg/ml)	Sample 3	Sample 3
D	Standard 4 (250 pg/ml)	Standard 4 (250 pg/ml)	Sample 4	Sample 4
E	Standard 5 (125 pg/ml)	Standard 5 (125 pg/ml)	Sample 5	Sample 5
F	Standard 6 (62.5 pg/ml)	Standard 6 (62.5 pg/ml)	Sample 6	Sample 6
G	Standard 7 (31.25 pg/ml)	Standard 7 (31.25 pg/ml)	Sample 7	Sample 7
H	Zero / Blank	Zero / Blank	Sample 8	Sample 8

- Seal the plate with a cover and incubate at 37°C for 90 min.

FOR RESEARCH USE ONLY. NOT FOR DIAGNOSTIC AND CLINICAL USE.

6. Remove the cover, aspirate the plate content and wash plate 3 times with Wash buffer (Kit Component 8) using one of the following methods:

Manual Washing: Discard the solution in the plate without touching the side walls. Clap the plate on absorbent filter papers or other absorbent material. Fill each well completely with Wash buffer (Kit Component 8) and vortex mildly on ELISA shaker for 2 min, then aspirate contents from the plate, and clap the plate on absorbent filter papers or other absorbent material. Repeat this procedure two more times for a **total of THREE washes**.

Automated Washing: Aspirate all wells, then wash plate **THREE times** with Wash buffer (Kit Component 8) (overfilling wells with the buffer, about 400 μ l). After the final wash, invert plate, and clap the plate on absorbent filter papers or other absorbent material. It is recommended that the washer be set for a soaking time of 1 min or shaking.

7. Add 0.1 ml of HRP conjugated anti-human ProGRP antibody work solution into each well. Add the solution at the bottom of each well without touching the side wall.
8. Seal the plate with a new cover and incubate at 37°C for 60 min.
9. Remove the cover, aspirate the plate content and wash plate **FIVE times** with Wash buffer (Kit Component 8), and each time let the wash buffer stay in the wells for 1-2 min. (Take reference of Step 6 for washing).
10. Add 0.1 ml of TMB substrate (Kit Component 6) into each well, cover the plate and incubate at 37°C in dark within 30 min. (**Note:** The color development on the plate should be monitored and the substrate reaction stopped before positive wells are no longer properly recordable. Determination of the ideal time period for color development has to be done individually for each assay. It is recommended to add the stop solution when the highest standard has developed a dark blue color.) And the shades of blue can be seen in the first 3-4 wells (with most concentrated human ProGRP standard solutions), the other wells show no obvious color.
11. Add 0.1 ml of Stop solution (Kit Component 7) into each well and mix thoroughly. The color changes into yellow immediately.
12. Read the O.D. absorbance at 450 nm in a microplate reader within 30 min after adding the stop solution.

Note: If the incubation without shaking, the obtained O.D. Values may be lower than the typical data, but the results are still valid.

For calculation, average the duplicate readings for each standard, control, and sample and subtract the average zero standard optical density. (The relative O.D.₄₅₀) = (the O.D.₄₅₀ of each well) – (the O.D.₄₅₀ of Zero well). The standard curve can be plotted as the relative O.D.₄₅₀ of each standard solution (Y) vs. the respective concentration of the standard solution (X). The human ProGRP concentration of the samples can be interpolated from the standard curve.

Note: 1. If the samples measured were diluted, multiply the dilution factor to the concentrations from interpolation to obtain the concentration before dilution.

2. Calculation of samples with a concentration exceeding 2000pg/ml may result in incorrect, low the human ProGRP levels. Such samples require further external pre-dilution according to expected human ProGRP values with Sample / Standard diluent buffer (Kit Component 3) in order to precisely quantitate the actual human ProGRP level.

FOR RESEARCH USE ONLY. NOT FOR DIAGNOSTIC AND CLINICAL USE.

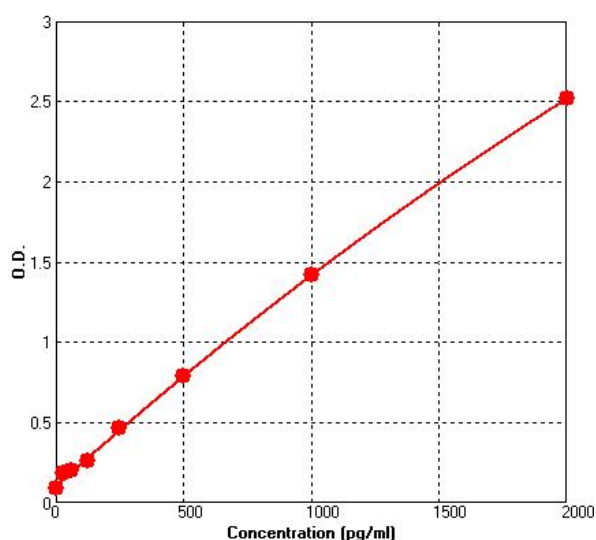
Precautions

1. All reagents should be considered as potentially hazardous. It is recommend that this kit is handled only by those persons who have been trained in laboratory techniques and that it is used in accordance with the principles of good laboratory practice. Wear suitable protective clothing such as laboratory overalls, safety glasses and gloves. Care should be taken to avoid contact with skin or eyes. In the case of contact with skin or eyes wash immediately with water.
2. **Store HRP conjugated anti-human ProGRP antibody (concentrated) (Kit Component 4) at 4℃, do NOT store it at -20℃.**
3. Do not use expired components or mix components from different lots or suppliers.
4. Avoid contact of skin or mucous membranes with kit reagents or specimens.
5. Rubber or disposable latex gloves should be worn while handling kit reagents or specimens.
6. Avoid contact of substrate solution with oxidizing agents and metal.
7. Avoid splashing or generation of aerosols.
8. To avoid microbial contamination or cross-contamination of reagents or specimens, it is recommended to use the clean and separate pipette tip for each.
9. Use clean, dedicated reagent trays for dispensing the conjugate and substrate reagent. Exposure to acid inactivates the conjugate.
10. Distilled or deionized water must be used for reagent preparation.
11. Substrate solution must be equilibrated at room temperature prior to use.

Typical Data & Standard Curve

Results of a typical standard run of a human ProGRP ELISA Kit are shown below. This standard curve was generated at our lab for demonstration purpose only. Each user should obtain their own standard curve as per experiment. (N/A=not applicable)

X	pg/ml	0	31.2	62.5	125	250	500	1000	2000
Y	OD450	0.089	0.180	0.199	0.260	0.461	0.789	1.422	2.519



FOR RESEARCH USE ONLY. NOT FOR DIAGNOSTIC AND CLINICAL USE.

Reference

1. Oh HJ, Park HY, Kim KH, Park CK, Shin HJ, Lim JH, Kwon YS, Oh IJ, Kim YI, Lim SC, Kim YC, Kim SH, Shin MG. Progastrin-releasing peptide as a diagnostic and therapeutic biomarker of small cell lung cancer. *J Thorac Dis.* 2016 Sep;8(9):2530-2537.
2. Hong Z, Shi Y, Liu Z, Zhou X, Yang Y, Tang J. Preliminary radioimmunoimaging and biodistribution of iodine-labeled single-chain antibody fragment against progastrin-releasing peptide (31-98) in small cell lung cancer xenografts. *Chin Med J (Engl).* 2014;127(11):2007-11.
3. Kim SY, Kim JS, Hwang SH, Park HK, Lee JH, Lee DH, Hah SS, Park do Y. Progastrin-releasing peptide is a candidate marker for quality control in clinical sample processing and storage. *Am J Clin Pathol.* 2012 Feb;137(2):277-82.
4. Korse CM1, Taal BG, Bonfrer JM, Vincent A, van Velthuisen ML, Baas P. An elevated progastrin-releasing peptide level in patients with well-differentiated neuroendocrine tumours indicates a primary tumour in the lung and predicts a shorter survival. *Ann Oncol.* 2011 Dec;22(12):2625-30.

FOR RESEARCH USE ONLY. NOT FOR DIAGNOSTIC AND CLINICAL USE.